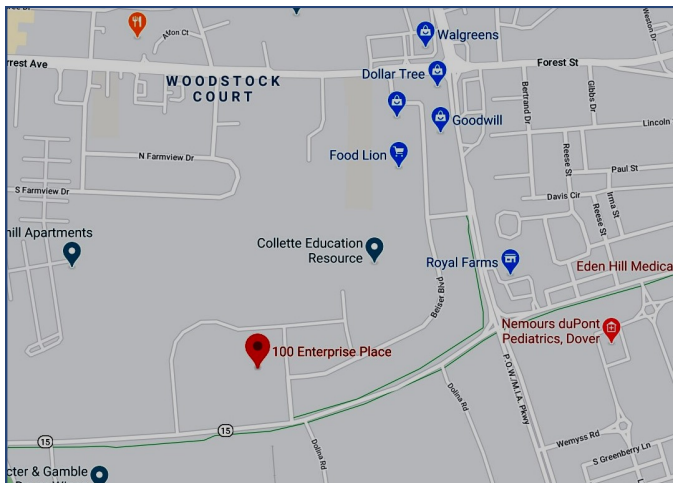


# Office For Lease



100 Enterprise Place

Dover, DE



## Property Information

- ⇒ 15,000+/- SF Office Space Available
- ⇒ Zoned IPM
- ⇒ Call for Pricing

For more information contact:

**Charlie Rodriguez**

302-674-3400

ccrod1@aol.com

All information contained herein is believed to be accurate, however was obtained from third parties and R & R Commercial Realty, Inc. does not warrant as to the accuracy submitted, subject to changes or modification without notice. Listing Broker represents the sellers interest.

**R&R Commercial Realty**

46 South State Street  
Dover, Delaware 19901

[www.RandRCommercialRealty.com](http://www.RandRCommercialRealty.com)

302-674-3400 (Office)

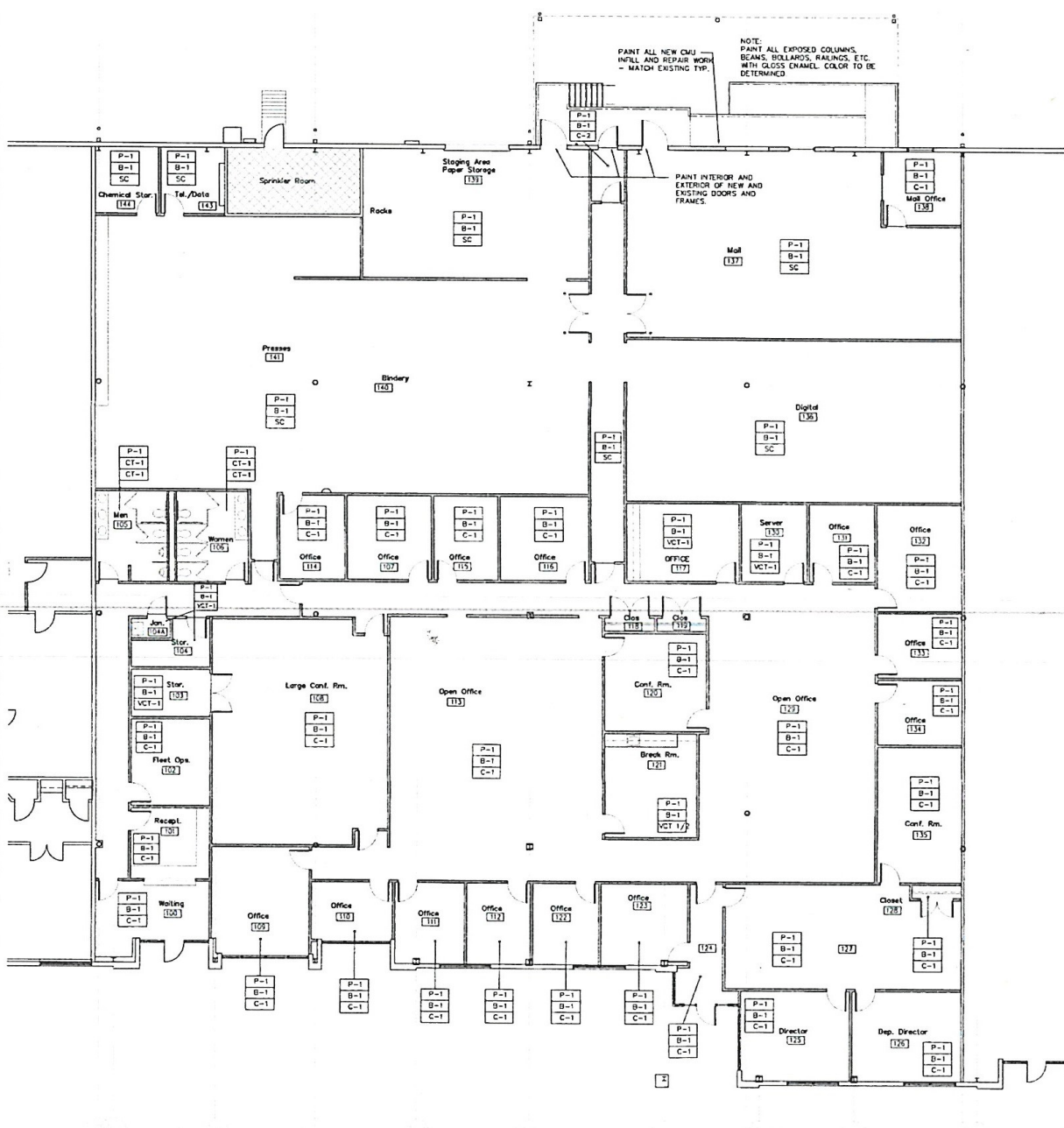
302-674-8479 (Fax)

# Office For Lease



100 Enterprise Place

Dover, DE



### Finish Schedule

**CARPET**  
C-1 Provide allowance of \$17.00 per yard installed.  
Mfg. TBD  
Style Name TBD  
Style # TBD  
Color Name TBD

C-2  
Mfg. Mohai, Inc.  
Style Name Supreme Neo  
Style # TBD  
Color Name TBD

**WALL BASE**  
B-1  
Mfg. Poplar  
4" High vinyl continuous base  
Color # TBD

### Finish Symbols

**Legend:**

- P-1 Wall treatment (paint, vinyl wall)
- B-1 Base treatment
- C-1 Floor treatment (carpet, vct, etc)

For more information contact:

**Charlie Rodriguez**

302-674-3400

ccrod1@aol.com

**R&R Commercial Realty**

46 South State Street  
Dover, Delaware 19901

www.RandRCommercialRealty.com

302-674-3400 (Office)

302-674-8479 (Fax)

All information contained herein is believed to be accurate, however was obtained from third parties and R & R Commercial Realty, Inc. does not warrant as to the accuracy submitted, subject to changes or modification without notice. Listing Broker represents the sellers interest.