



For Sale
20785 DuPont Blvd.

Georgetown, DE

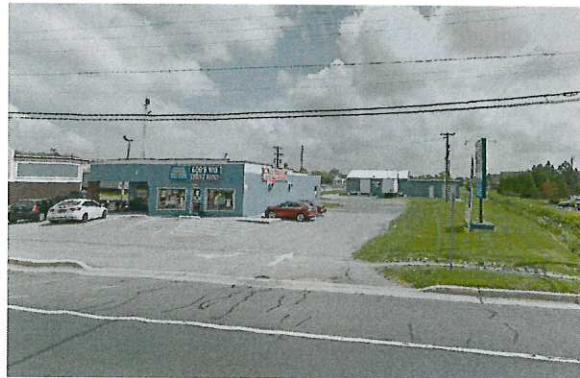
PROPERTY OVERVIEW

Prime development parcel with city site plan approval in place. Property site sits North of McDonalds and South of Shone's Lumber. Two buildings one retail and the other warehouse could be rented for extra income.



PROPERTY DETAILS

- Located DuPont Hwy
- 1.03 +/- Acres
- Tax ID: 135-14.19-68.00
- 4131 +/- sq. ft Space
- 2200 +/- sq. ft Space
- Zoning HC
- \$750,000.



DEMOGRAPHICS	City	County	National
Population	6,983	227,813	328,288,910
People per Household	3.4	2.4	2.6
Average Household Income	\$38,804	\$50,044	\$50,013
Median Age	33.4	46.8	38.6

FOR MORE INFORMATION, CONTACT:

Keith Walpole

Cell – 302-236-7053

kwalpolecommercial@gmail.com

R & R Commercial Realty

46 S State Dover, De 19901

Office: 302-674-3400 Fax: 302-674-8479

www.randrcommercialrealty.com

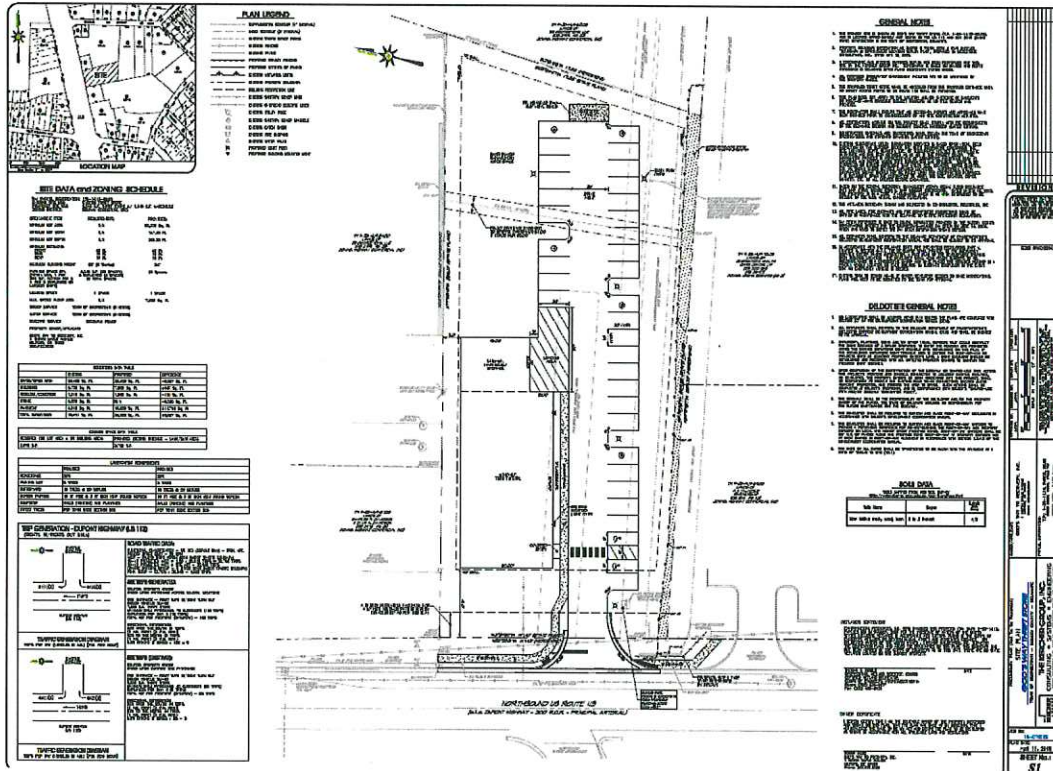
All information contained herein is believed to be accurate, however was obtained from third parties and R & R Commercial Realty, Inc., does not warrant as to the accuracy submitted, subject to changes or modification without notice.

Listing Broker represents the seller's interest.



20785 DuPont Blvd. Georgetown, DE

Site Plan & Map



FOR MORE INFORMATION, CONTACT:

Keith Walpole

Cell: 302-236-7053

kwalpolecommercial@gmail.com

R & R Commercial Realty

46 S State St. Dover, DE 19901

Office: 302-674-3400, Fax: 302-674-8479

www.randrcommercialrealty.com

All information contained herein is to believe to be accurate, however was obtained from third parties and R & R Commercial Realty, Inc, does not warrant to the accuracy submitted, subject to changes or modification without notice.

Listing Brokers represents seller's interest.