

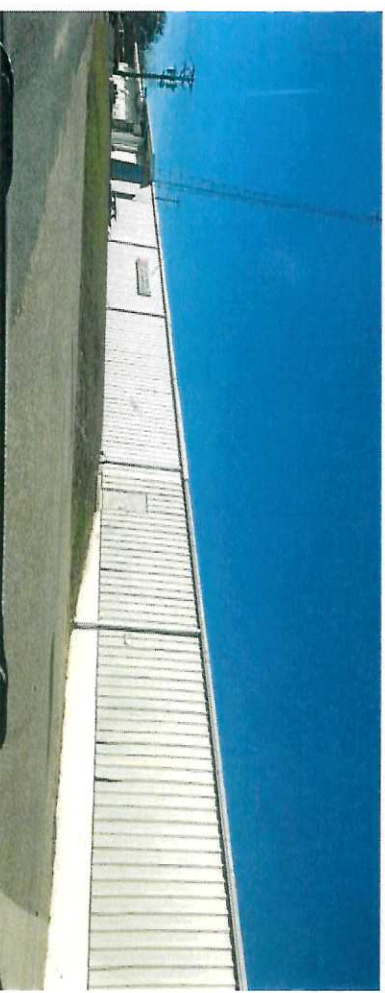
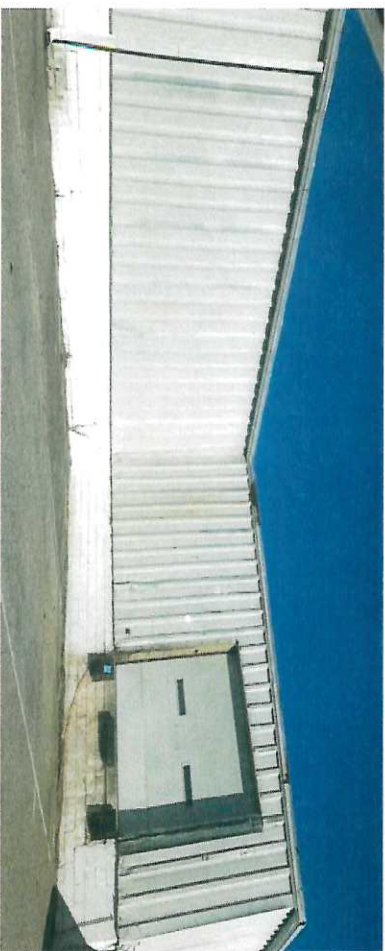
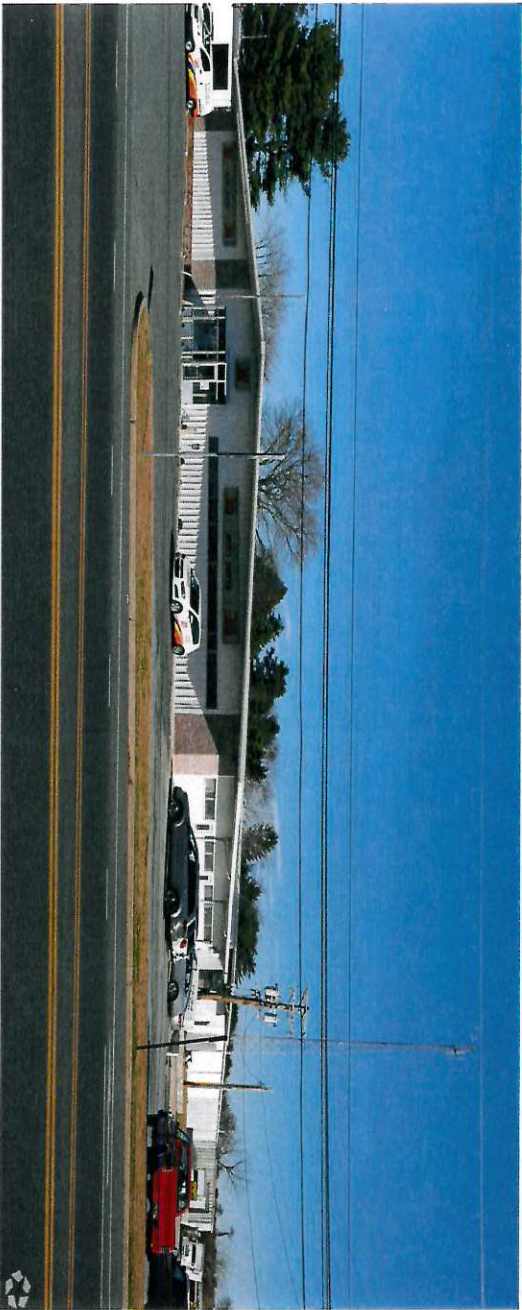


For Lease

601 N Rehoboth Blvd. Milford, DE

Property Details:

- ⇒ 9,760 +/- SF
- ⇒ Zoned Commercial C3
- ⇒ Open Space
- ⇒ Office can be built as needed
- ⇒ **LOADING RAMP & LARGE ROLL UP DOOR**
- ⇒ Price: \$4.25 per sq. ft. NNN
- ⇒ Conveniently Located



FOR MORE INFORMATION, CONTACT:

Keith Walpole

Cell: 302-236-7053

Info: kwalpoleccommercial@gmail.com

R & R Commercial Realty Inc

46 S State St. Dover, DE 19901

Office: 302-674-3400, Fax: 302-674-8479

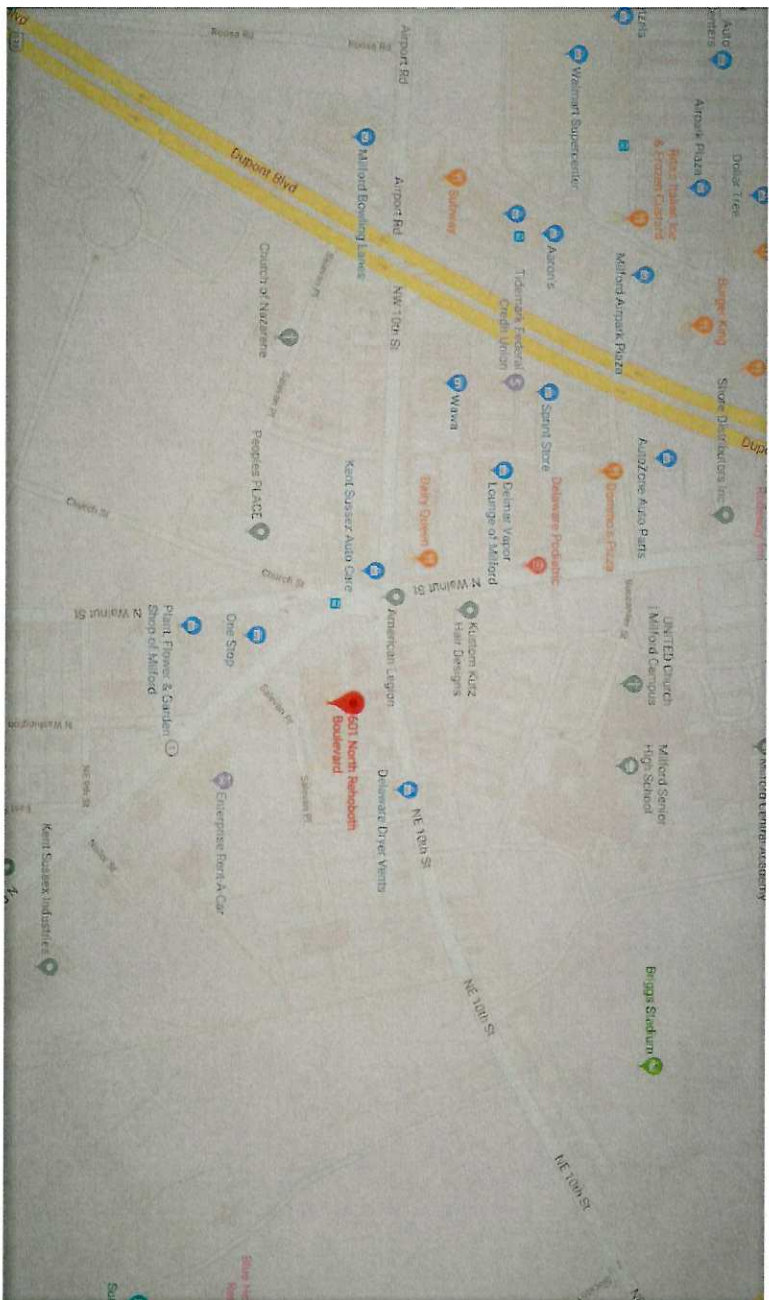
www.randrcommercialrealty.com

All information contained herein is to believe to be accurate, however was obtained from third parties and R & R Commercial Realty, Inc, does not warrant to the accuracy submitted, subject to changes or modification without notice.
Listing Broker's represents seller's interest.



For Lease

601 N Rehoboth Blvd. Milford, DE



FOR MORE INFORMATION, CONTACT:

Keith Walpole

Cell: 302-236-7053

Info: kwalpolecmercial@gmail.com

All information contained herein is to believe to be accurate, however was obtained from third parties and R & R Commercial Realty, Inc. does not warrant to the accuracy submitted, subject to changes or modification without notice.
Listing Broker's represents seller's interest.

R & R Commercial Realty Inc

46 S State St. Dover, DE 19901

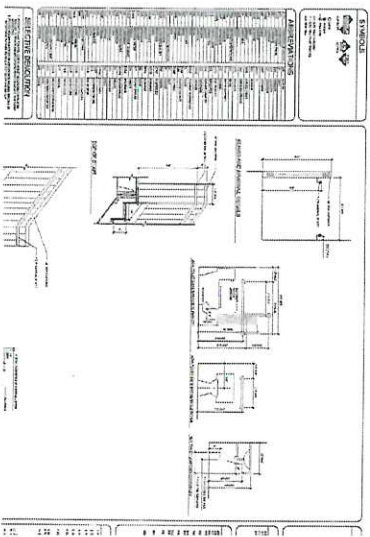
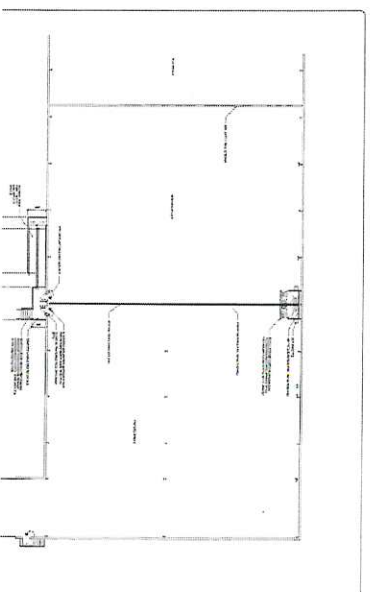
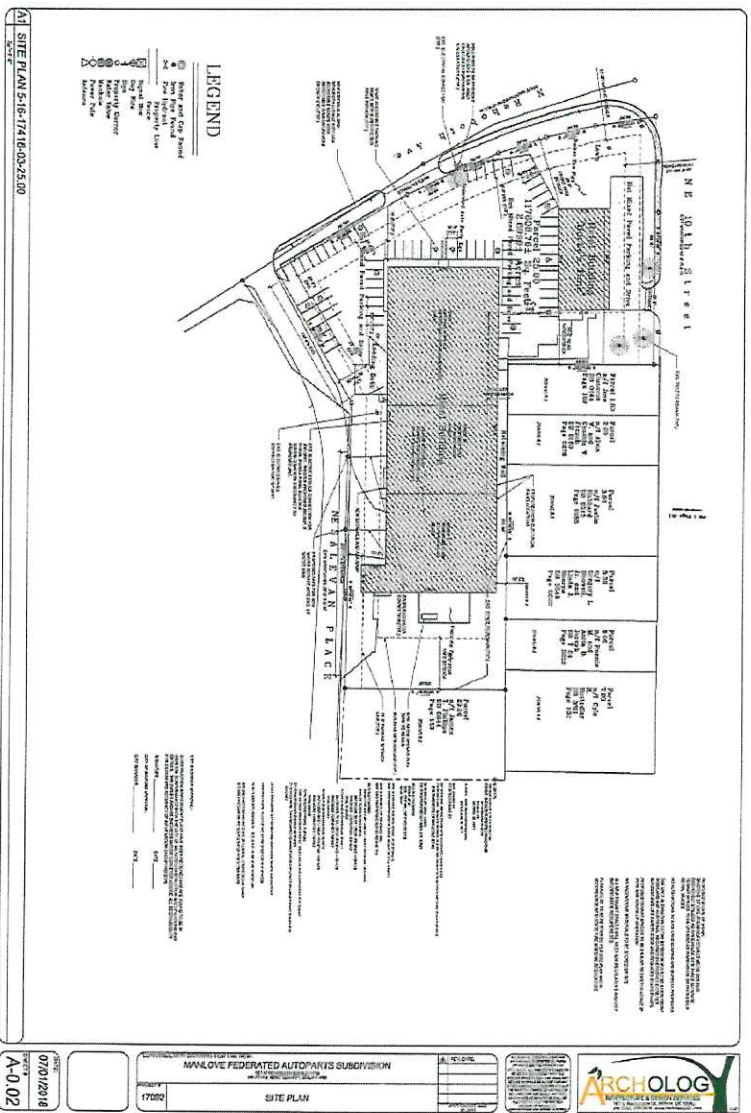
Office: 302-674-3400, Fax: 302-674-8479

www.randcommercialrealty.com



For Lease

601 N Rehoboth Blvd. Milford, DE



FOR MORE INFORMATION, CONTACT:

Keith Walpole

Cell: 302-236-7053

Info.kwalpolecommercial@gmail.com

All information contained herein is to believe to be accurate, however was obtained from third parties and R & R Commercial Realty, Inc. does not warrant to the accuracy submitted, subject to changes or modification without notice.
 Listing Brokers represents seller's interest.

R & R Commercial Realty Inc

46 S State St. Dover, DE 19901

Office: 302-674-3400, Fax: 302-674-8479

www.randcommercialrealty.com