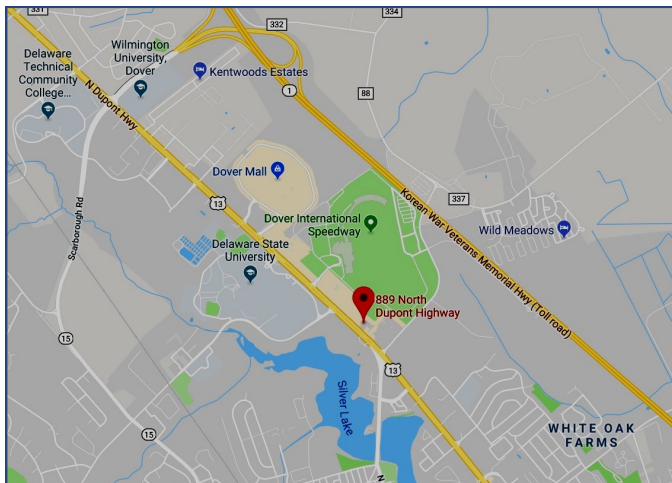


# For Lease



889 N. DuPont Hwy.

Dover, DE



## Property Information

- ⇒ 5,000+/- SF Building  
Lease Price: \$18.00 psf NNN
- ⇒ 1.80+/- Acre Lot  
Ground Lease: \$140,000 per year
- ⇒ Zoned C4

2018 Demographics	1 Mile	3 Miles	5 Miles
Population	5,474	40,484	64,550
Median Income	\$46,011	\$49,202	\$50,466

For more information contact:

**Charlie Rodriguez**

302-674-3400

ccrod1@aol.com

All information contained herein is believed to be accurate, however was obtained from third parties and R & R Commercial Realty, Inc. does not warrant as to the accuracy submitted, subject to changes or modification without notice. Listing Broker represents the sellers interest.

**R&R Commercial Realty**

46 South State Street  
Dover, Delaware 19901

www.RandRCommercialRealty.com

302-674-3400 (Office)

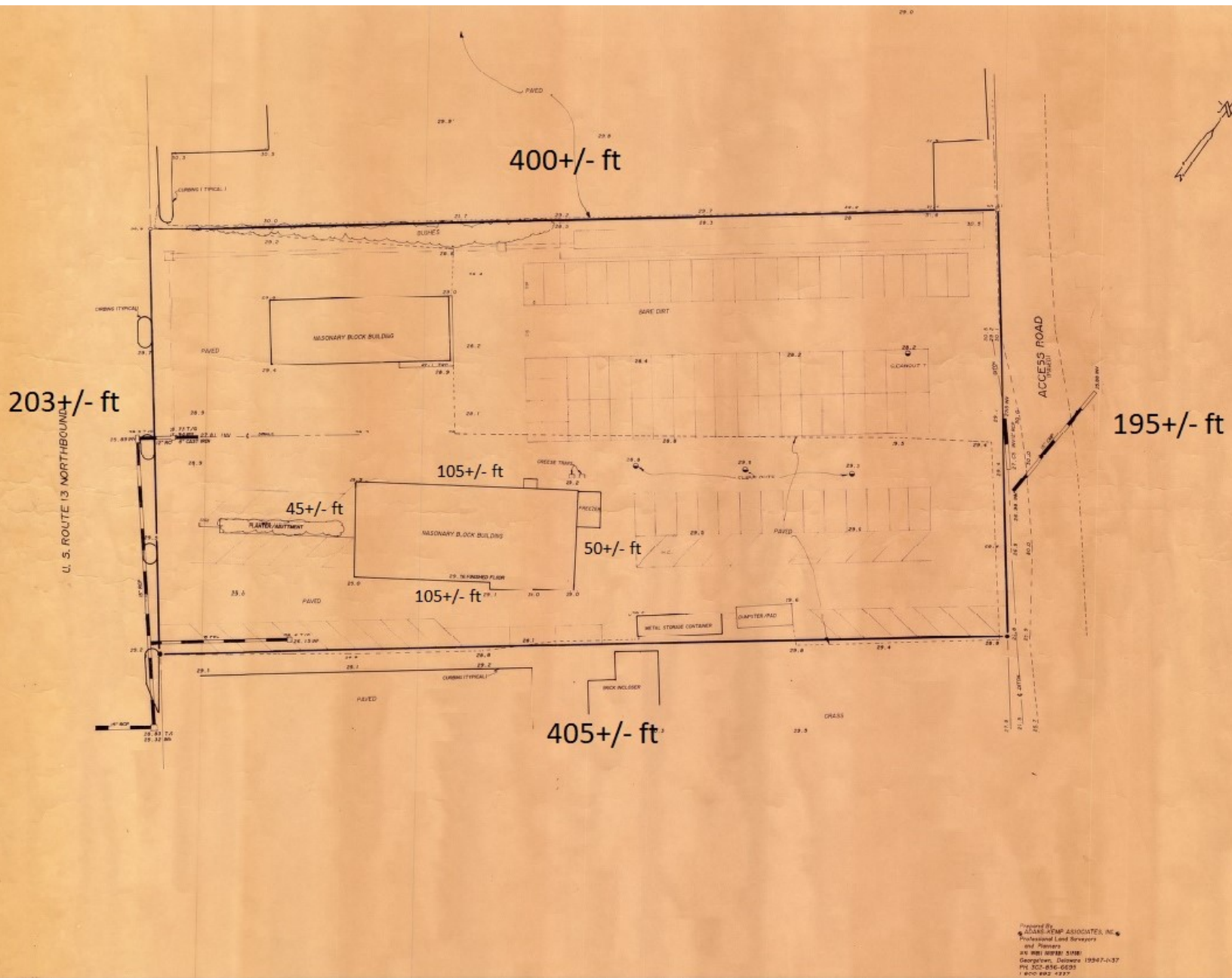
302-674-8479 (Fax)

# For Lease



889 N. DuPont Hwy.

Dover, DE



For more information contact:

**Charlie Rodriguez**

302-674-3400

ccrod1@aol.com

All information contained herein is believed to be accurate, however was obtained from third parties and R & R Commercial Realty, Inc. does not warrant as to the accuracy submitted, subject to changes or modification without notice. Listing Broker represents the sellers interest.

**R&R Commercial Realty**

46 South State Street  
Dover, Delaware 19901

www.RandRCommercialRealty.com

302-674-3400 (Office)

302-674-8479 (Fax)